



2020 Redistricting Summary Data for Howard County



**HOWARD COUNTY
REDISTRICTING COMMISSION**

SEPTEMBER 14, 2021





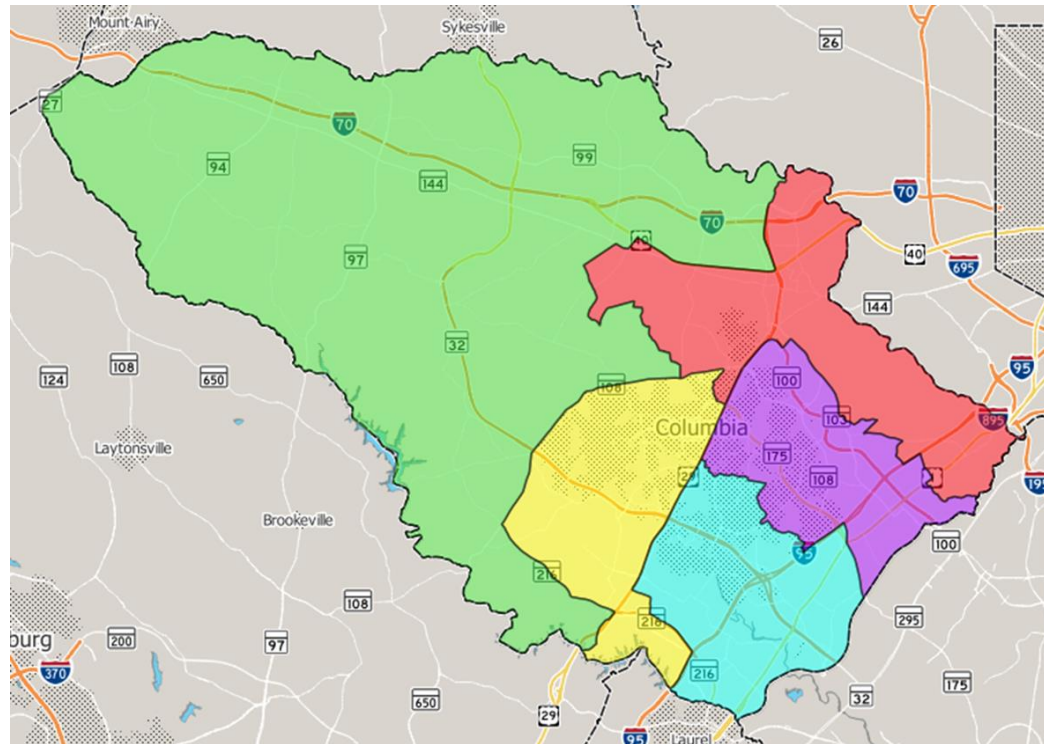
Howard County 2020 Redistricting

2020 Decennial Census Population Counts (after redistribution of prisoner population)

| District | Population | Percent | Diff from Ideal | % Diff from Ideal |
|--------------|----------------|-------------|-----------------|-------------------|
| 1 | 69,644 | 21% | 3,181 | 4.8% |
| 2 | 70,899 | 21% | 4,436 | 6.7% |
| 3 | 64,998 | 20% | (1,465) | -2.2% |
| 4 | 61,947 | 19% | (4,516) | -6.8% |
| 5 | 64,316 | 19% | (2,147) | -3.2% |
| Total | 331,804 | 100% | | |

Ideal ==> **66,361** Total 2020 population count divided by 5

Council districts should be compact, contiguous, substantially equal in population, and have common interest as a result of geography, occupation, history, or existing boundaries.





Howard County 2010 Redistricting

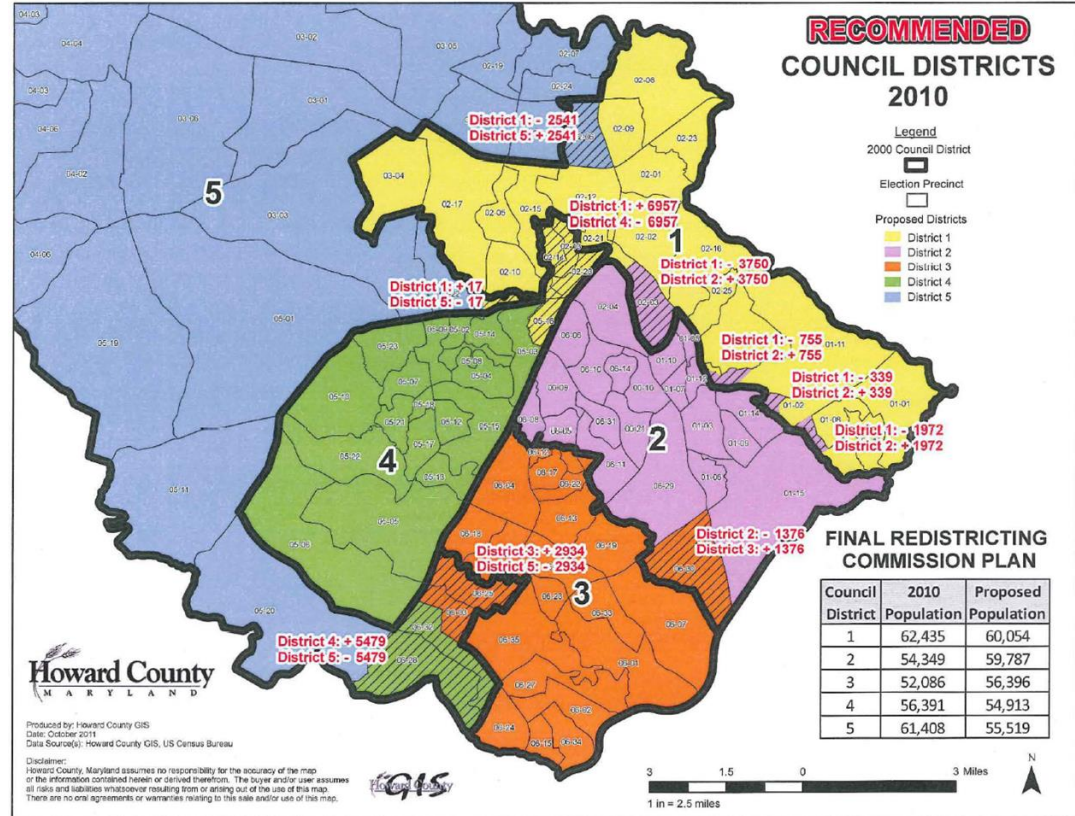
2010 Decennial Census Population Counts (Before Redistricting)

| District | Population | Percent | Diff from Ideal | % Diff from Ideal |
|--------------|----------------|-------------|-----------------|-------------------|
| 1 | 62,435 | 22% | 5,101 | 8.9% |
| 2 | 54,349 | 19% | (2,985) | -5.2% |
| 3 | 52,086 | 18% | (5,248) | -9.2% |
| 4 | 56,391 | 20% | (943) | -1.6% |
| 5 | 61,408 | 21% | 4,074 | 7.1% |
| Total | 286,669 | 100% | | |

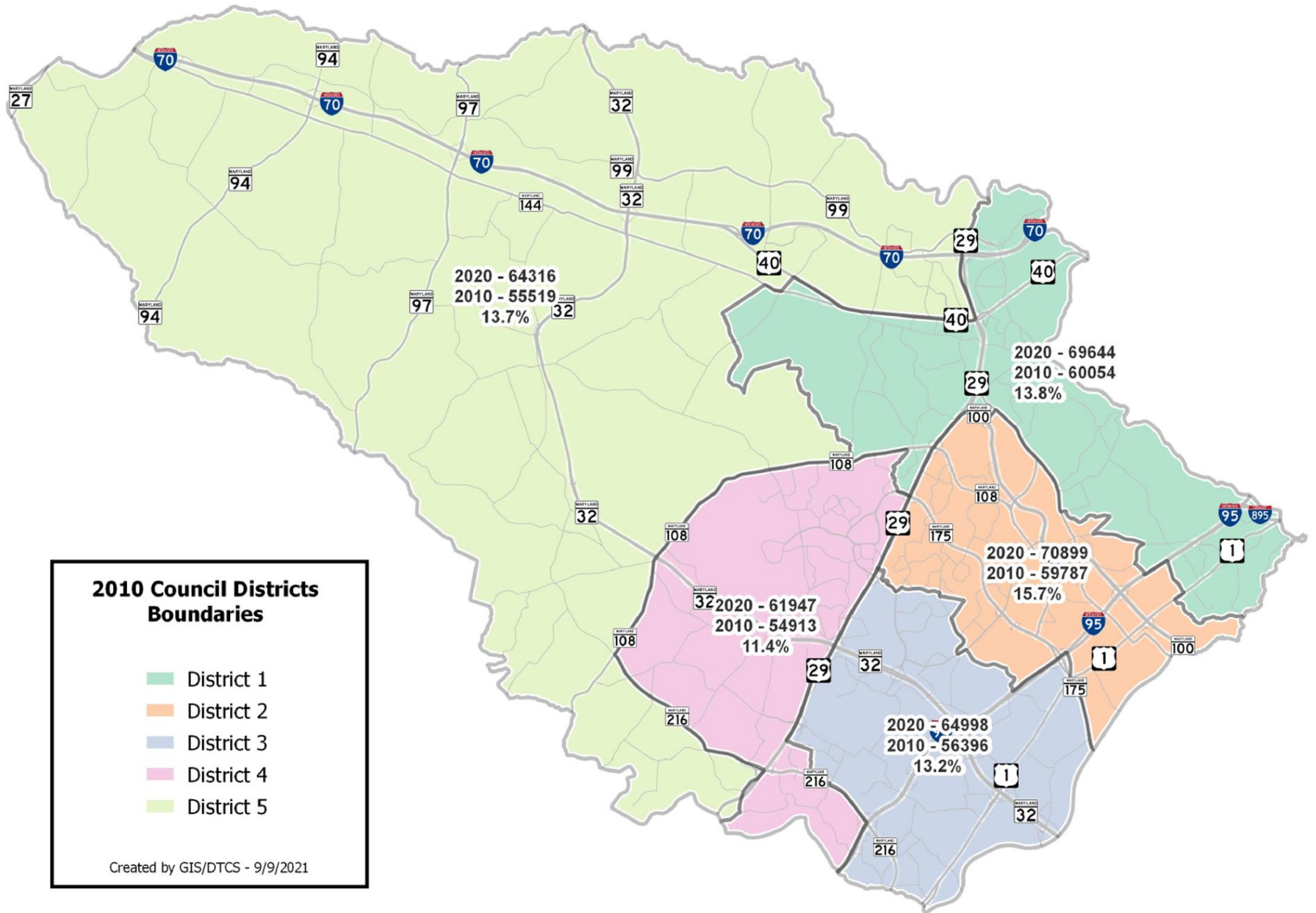
Ideal ==> **57,334** Total 2020 population count divided by 5

2010 Decennial Census Population Counts (After Redistricting)

| District | Population | Percent | Diff from Ideal | % Diff from Ideal |
|--------------|----------------|-------------|-----------------|-------------------|
| 1 | 60,054 | 21% | 2,720 | 4.7% |
| 2 | 59,787 | 21% | 2,453 | 4.3% |
| 3 | 56,396 | 20% | (938) | -1.6% |
| 4 | 54,913 | 19% | (2,421) | -4.2% |
| 5 | 55,519 | 19% | (1,815) | -3.2% |
| Total | 286,669 | 100% | | |



2010 to 2020 Population Growth By Council District



2010 Council Districts Boundaries

- District 1
- District 2
- District 3
- District 4
- District 5

Created by GIS/DTCS - 9/9/2021

Questions

