

Howard County Demographics

New 2010 Census Data

Jeff Bronow, Chief

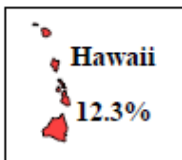
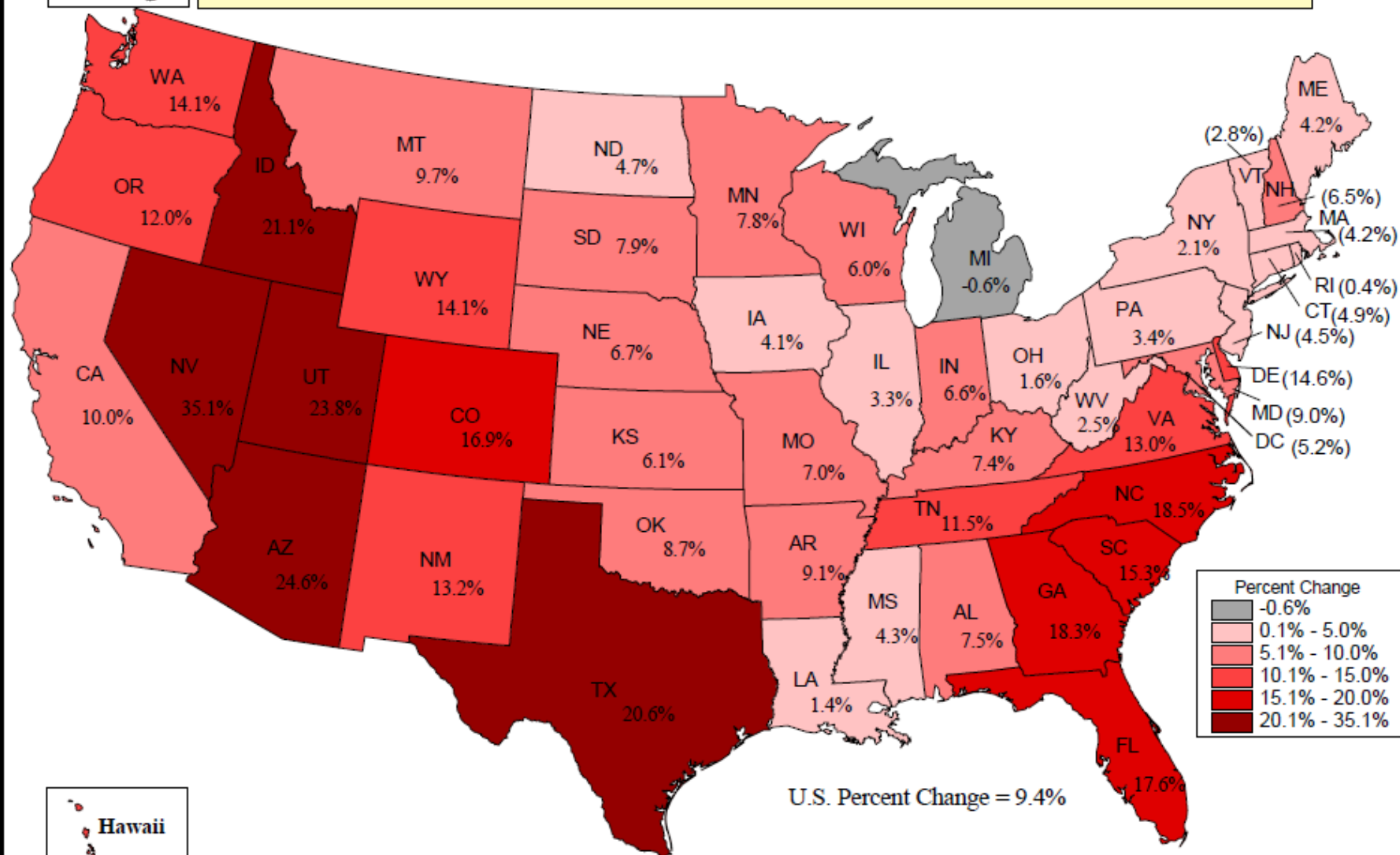
Division of Research

Department of Planning and Zoning

Brief Census Overview

- 2010 Census:
 - 1) Population, 2) Age, 3) Race, 4) Hispanic or Latino Origin, 5) Housing Occupancy, 6) Housing Tenure
- No more “long form,” no detailed characteristics
- Instead have American Community Survey

Percentage Change in Population by State, 2000 to 2010

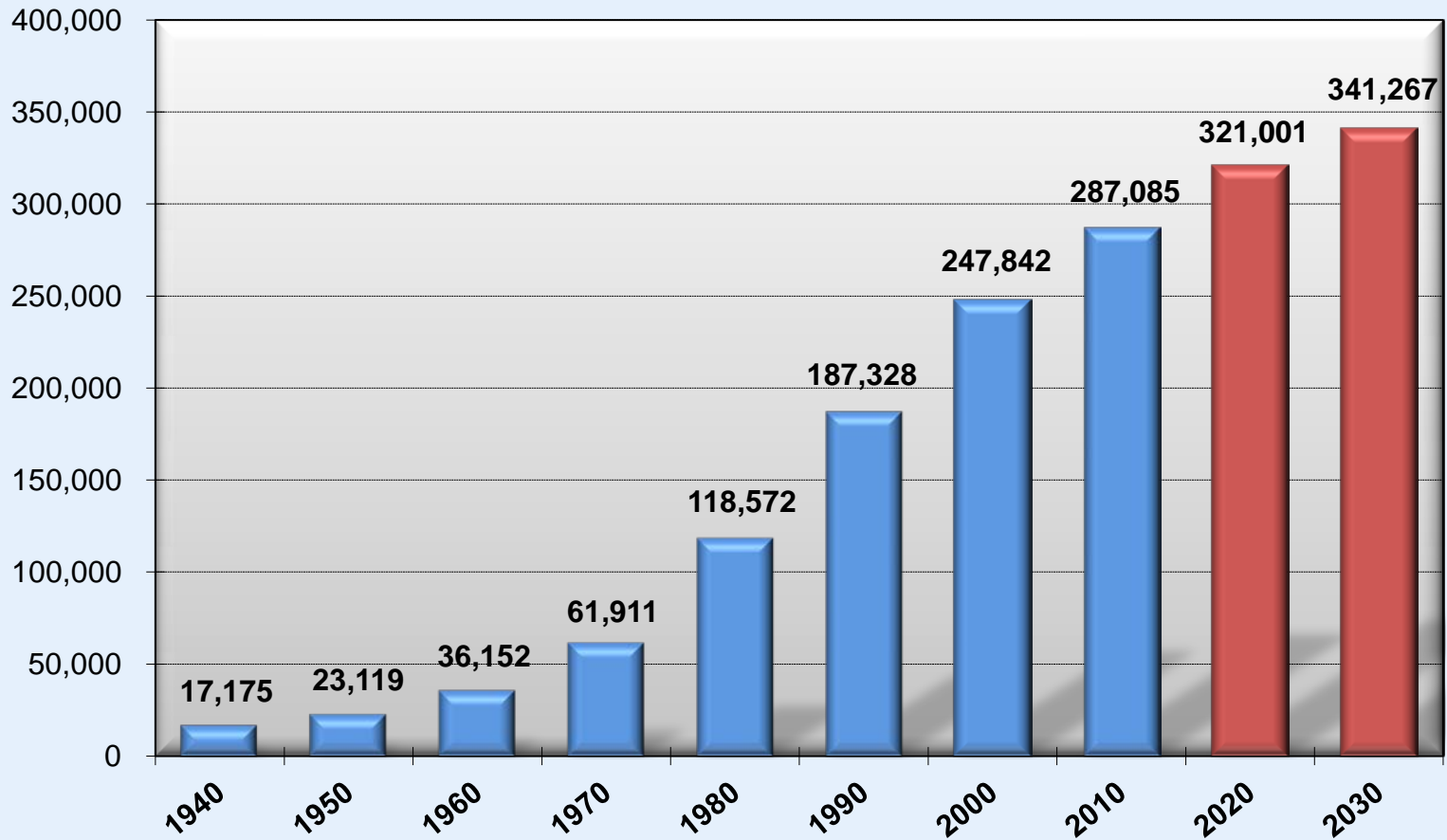


U.S. Percent Change = 9.4%

MDP

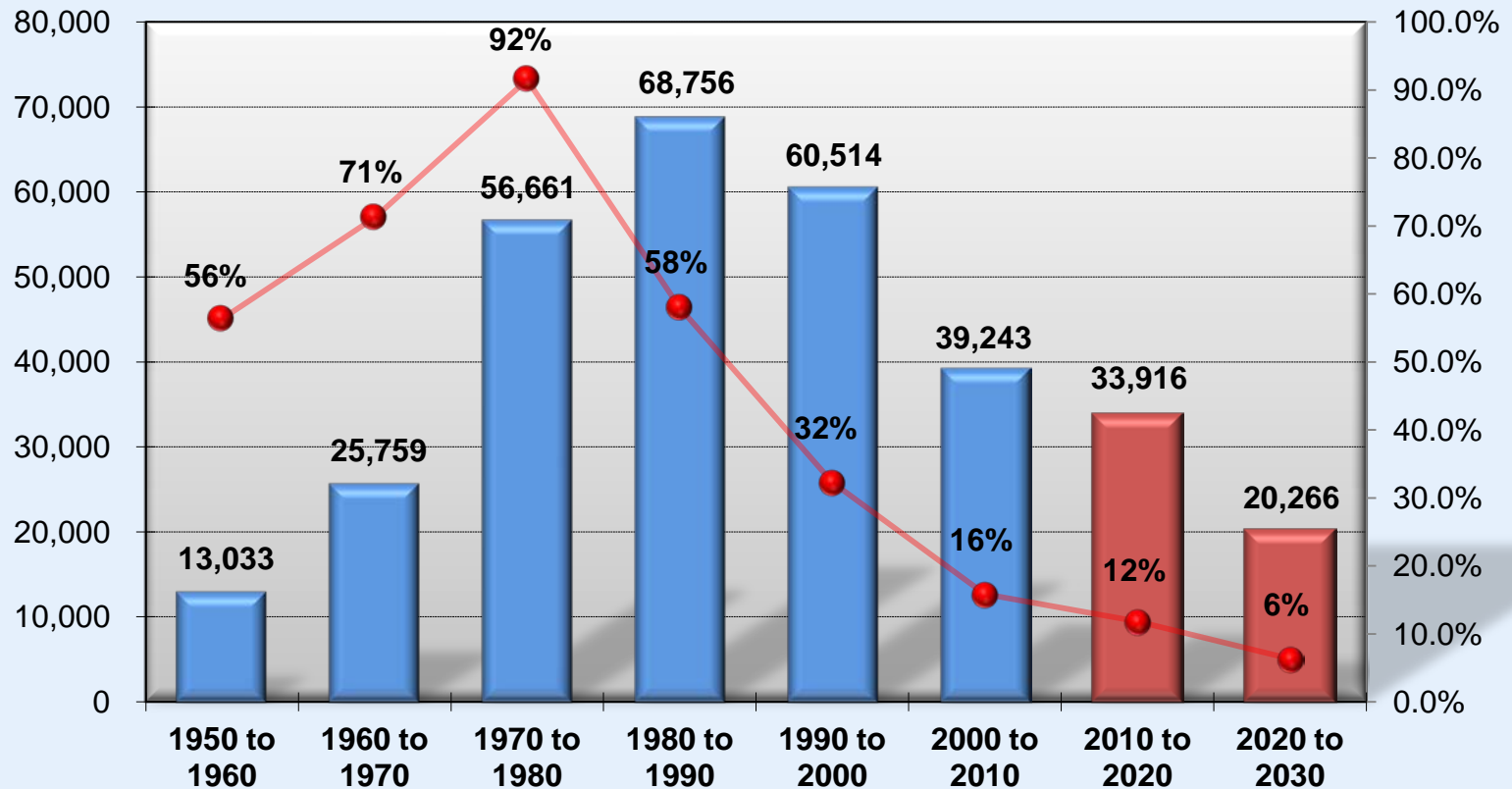
Prepared by the Maryland Department of Planning, Projections & Data Analysis / State Data Center
Source: U.S. Census Bureau, 2000 & 2010 Census

Howard County Population Growth 1940 to 2030



Source: US Census Bureau, DPZ (Round 7D)

Howard County Population Growth 1950 to 2030



Source: US Census Bureau, DPZ (Round 7D)

Population Growth Percent Growth

Population by Race, 2000 & 2010

Howard County Population by Race -- 2000 to 2010

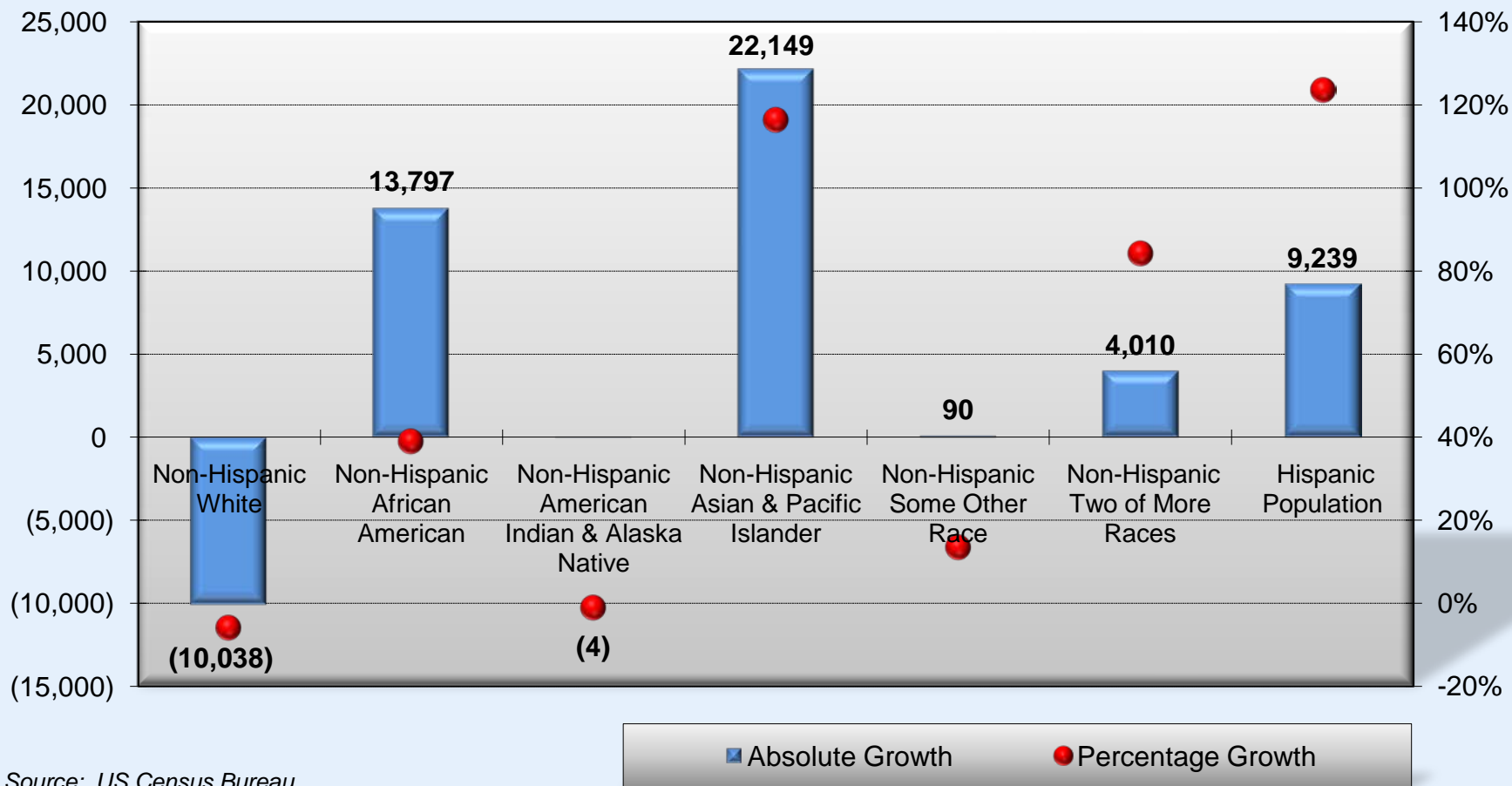
	2000		2010		Growth	
Population of One Race Alone (Non-Hispanic)	235,591	95.1%	261,585	91.1%	25,994	11.0%
White (Non-Hispanic)	180,010	72.6%	169,972	59.2%	(10,038)	-5.6%
African American (Non-Hispanic)	35,353	14.3%	49,150	17.1%	13,797	39.0%
Amer. Ind. & Alaska Native (Non-Hispanic)	515	0.2%	511	0.2%	(4)	-0.8%
Asian & Pacific Islander (Non-Hispanic)	19,057	7.7%	41,206	14.4%	22,149	116.2%
Some Other Race (Non-Hispanic)	656	0.3%	746	0.3%	90	13.7%
Population of Two or More Races (Non-Hispanic) (1)	4,761	1.9%	8,771	3.1%	4,010	84.2%
TOTAL NON-HISPANIC POPULATION	240,352	97.0%	270,356	94.2%	30,004	12.5%
TOTAL HISPANIC POPULATION (2)	7,490	3.0%	16,729	5.8%	9,239	123.4%
GRAND TOTAL POPULATION	247,842	100.0%	287,085	100.0%	39,243	16%

(1) This option was available for the first time in the 2000 Census.

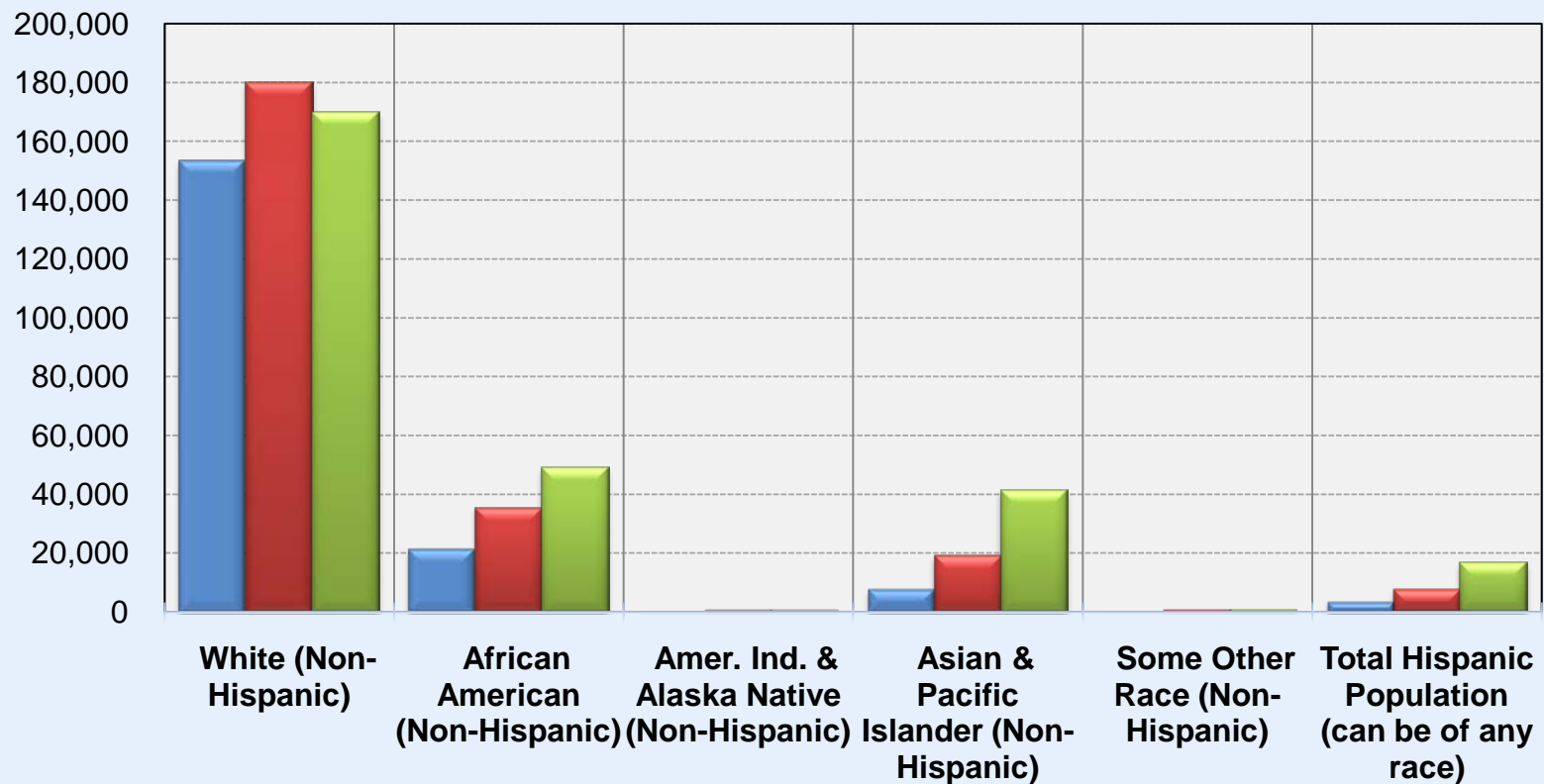
(2) Hispanic Origin can be from any race.

Source: U.S. Census Bureau

Howard County Population Growth by Race 2000 to 2010



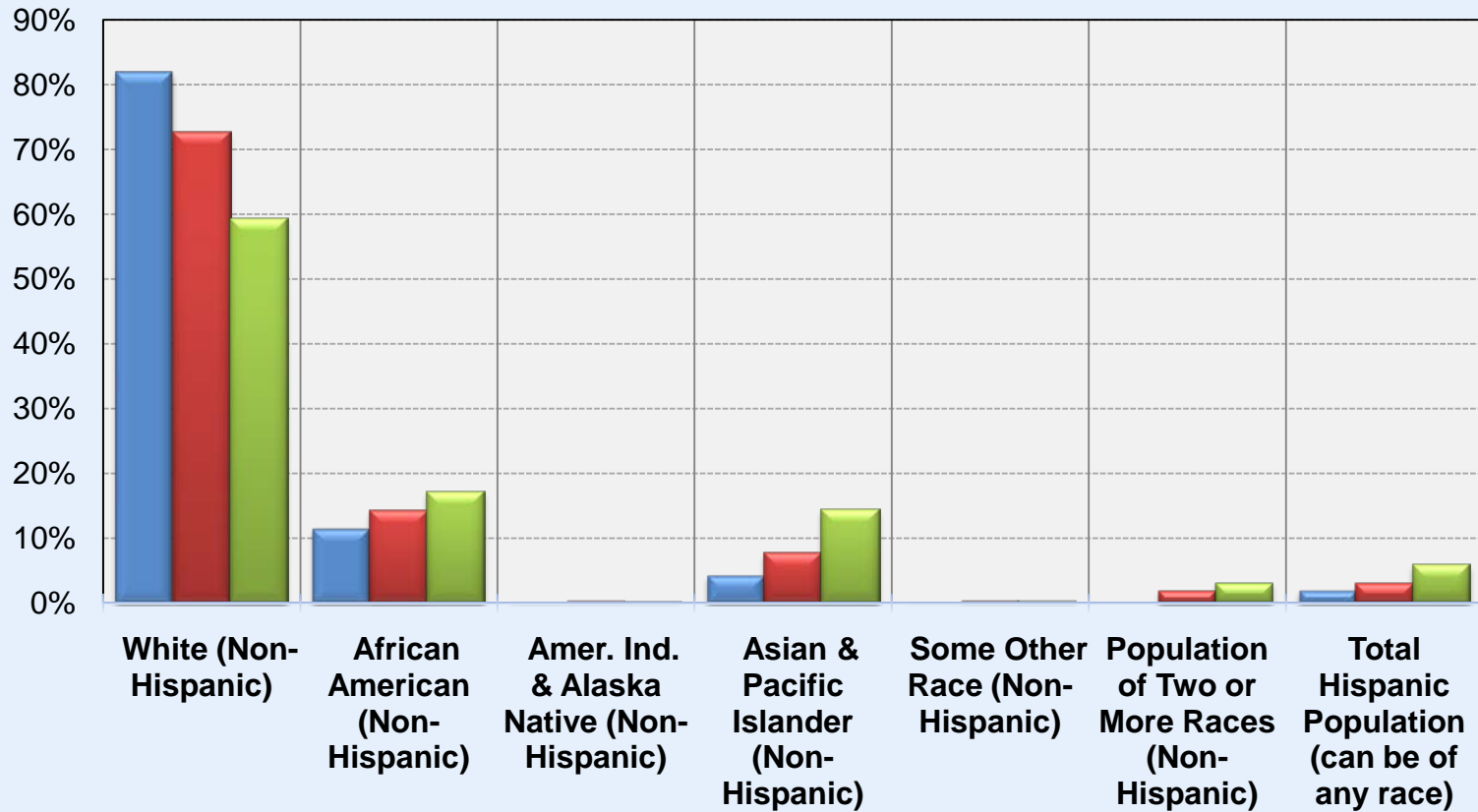
Howard County Population by Race & Hispanic Origin 1990, 2000, 2010



■ 1990 ■ 2000 ■ 2010

Source: U.S. Census Bureau Bureau

Howard County Population by Race & Hispanic Origin 1990, 2000, 2010



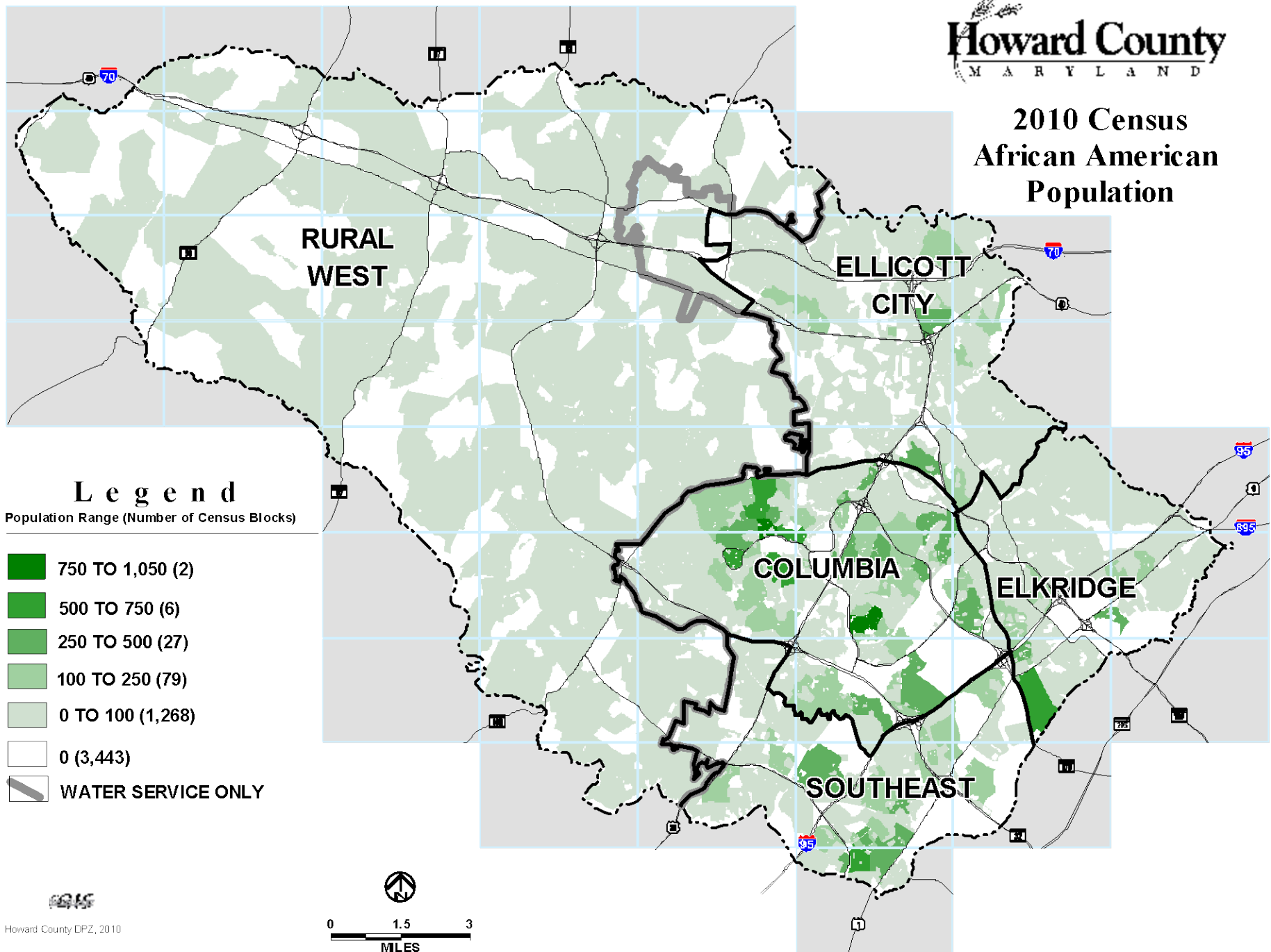
Source: U.S. Census Bureau Bureau

■ 1990

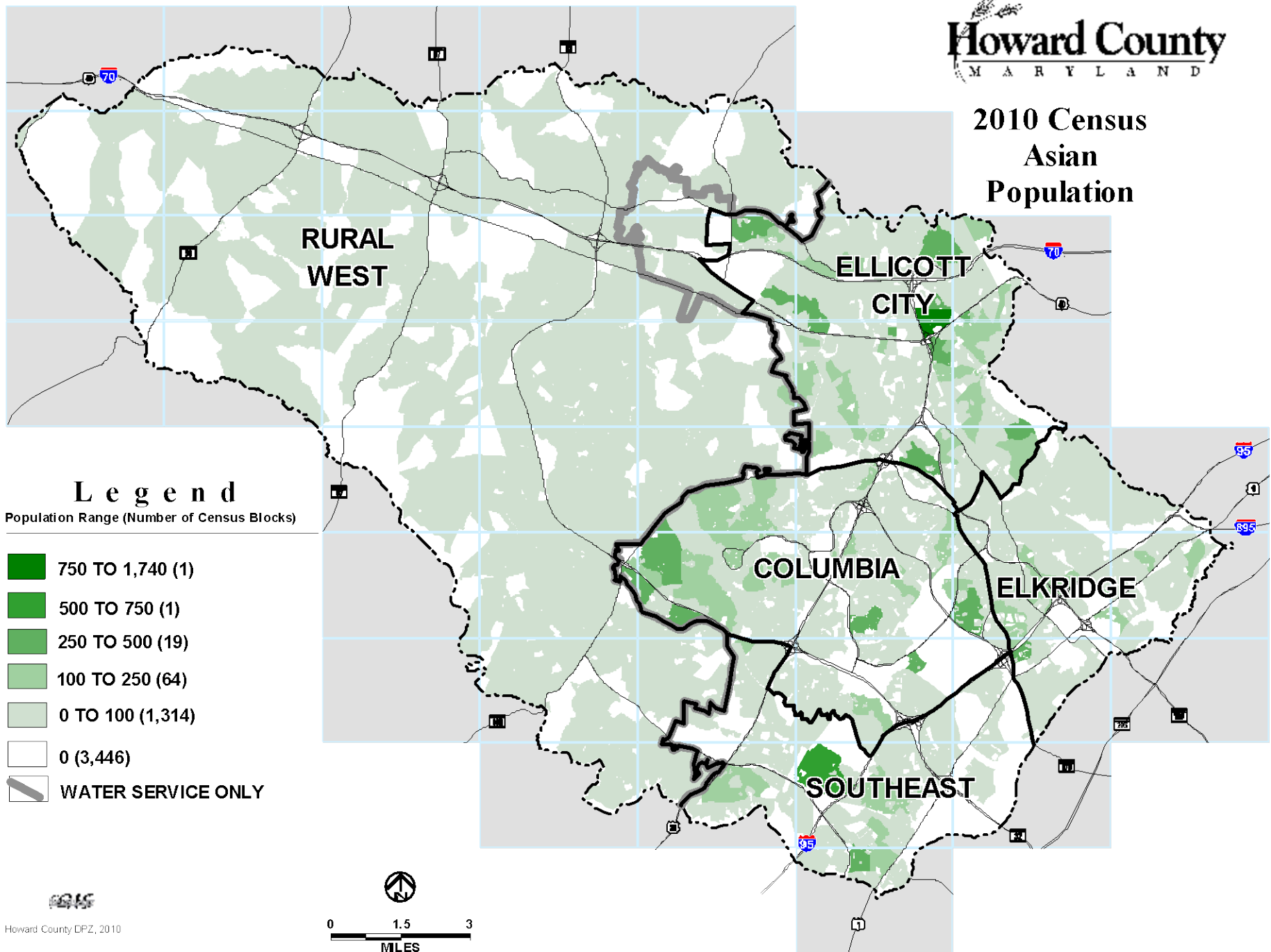
■ 2000

■ 2010

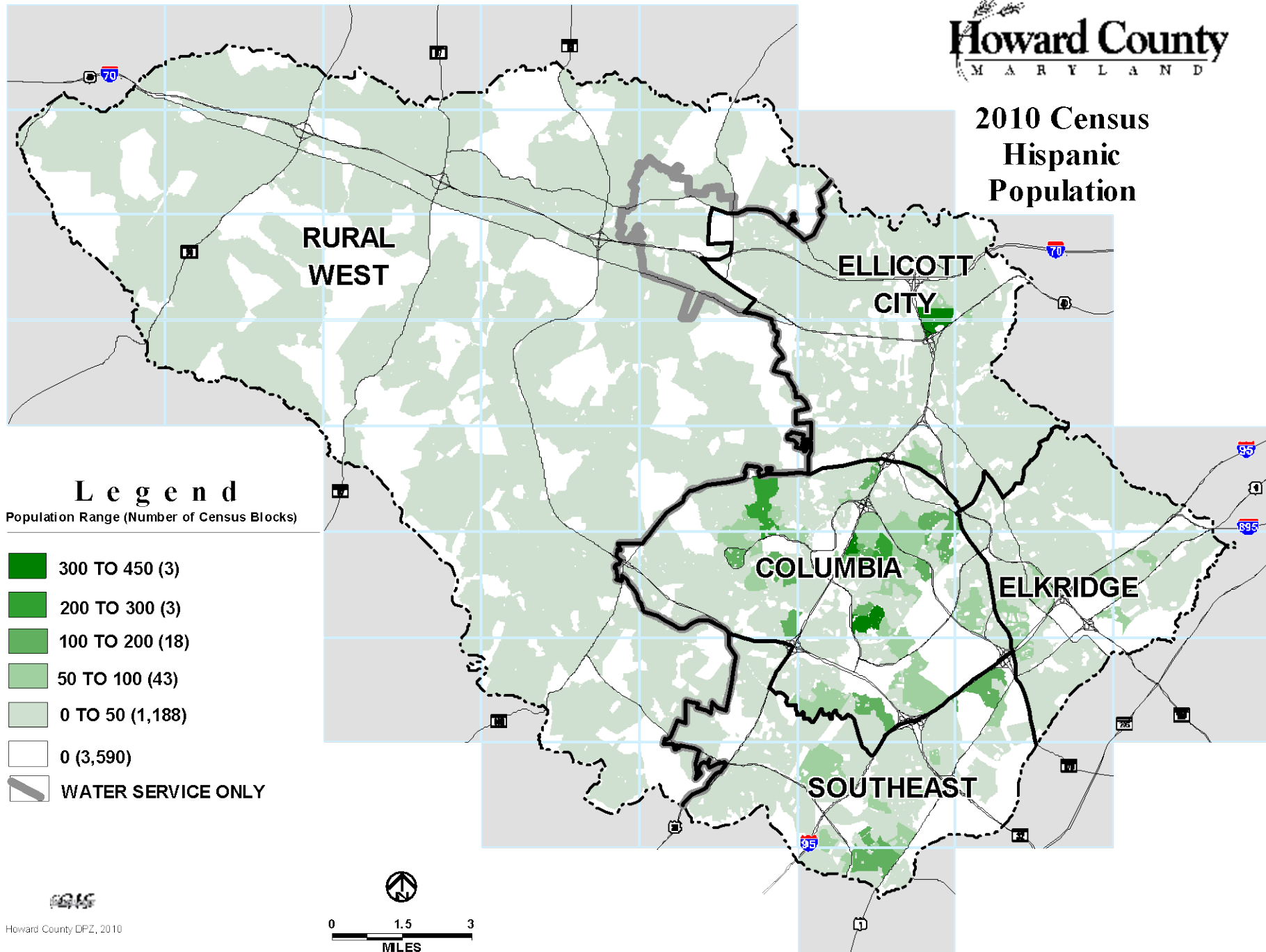
2010 Census African American Population



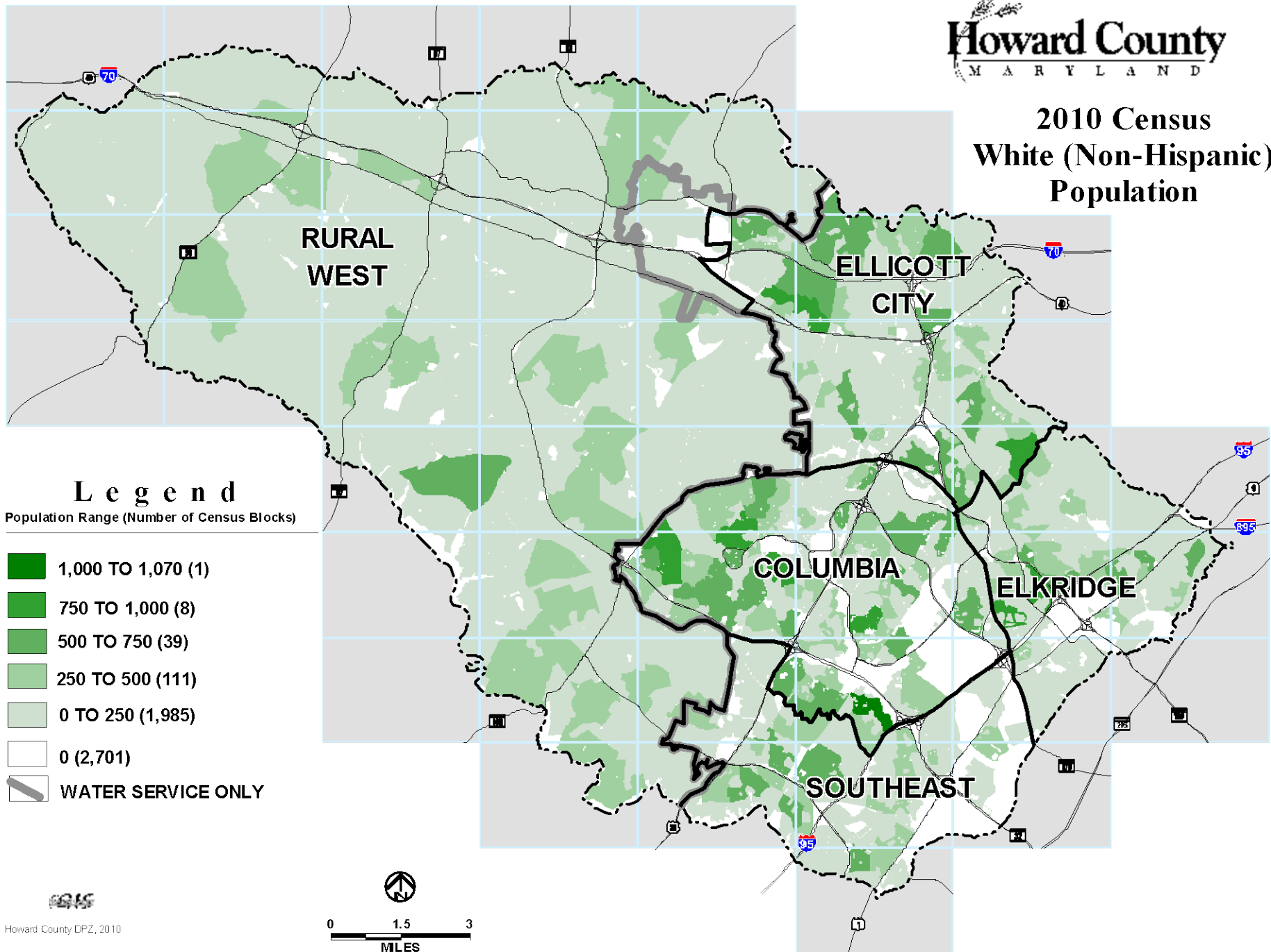
2010 Census Asian Population



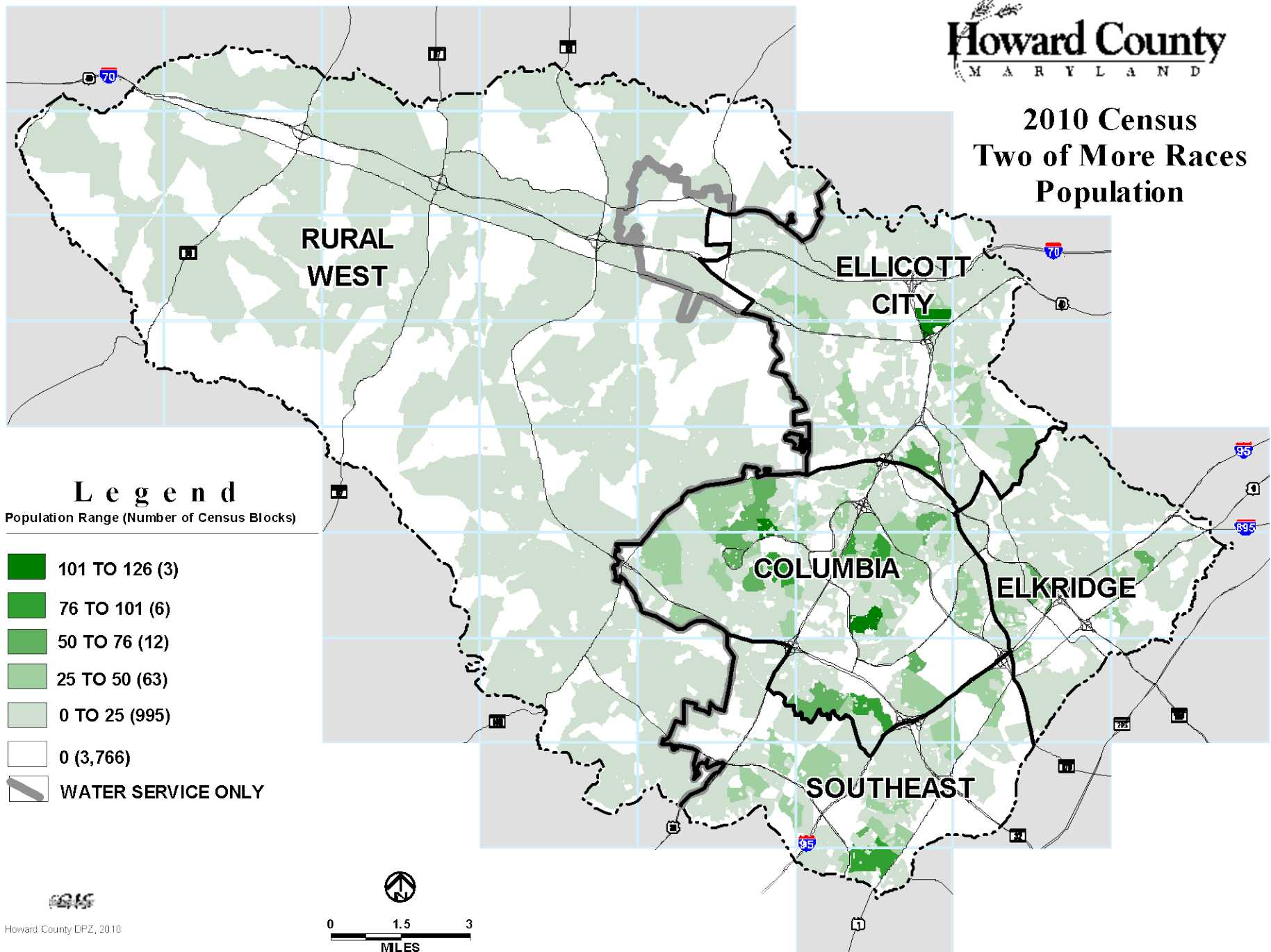
**2010 Census
Hispanic
Population**



2010 Census White (Non-Hispanic) Population



2010 Census Two of More Races Population



Population by Race by Planning Area

Howard County Population by Race -- 2010

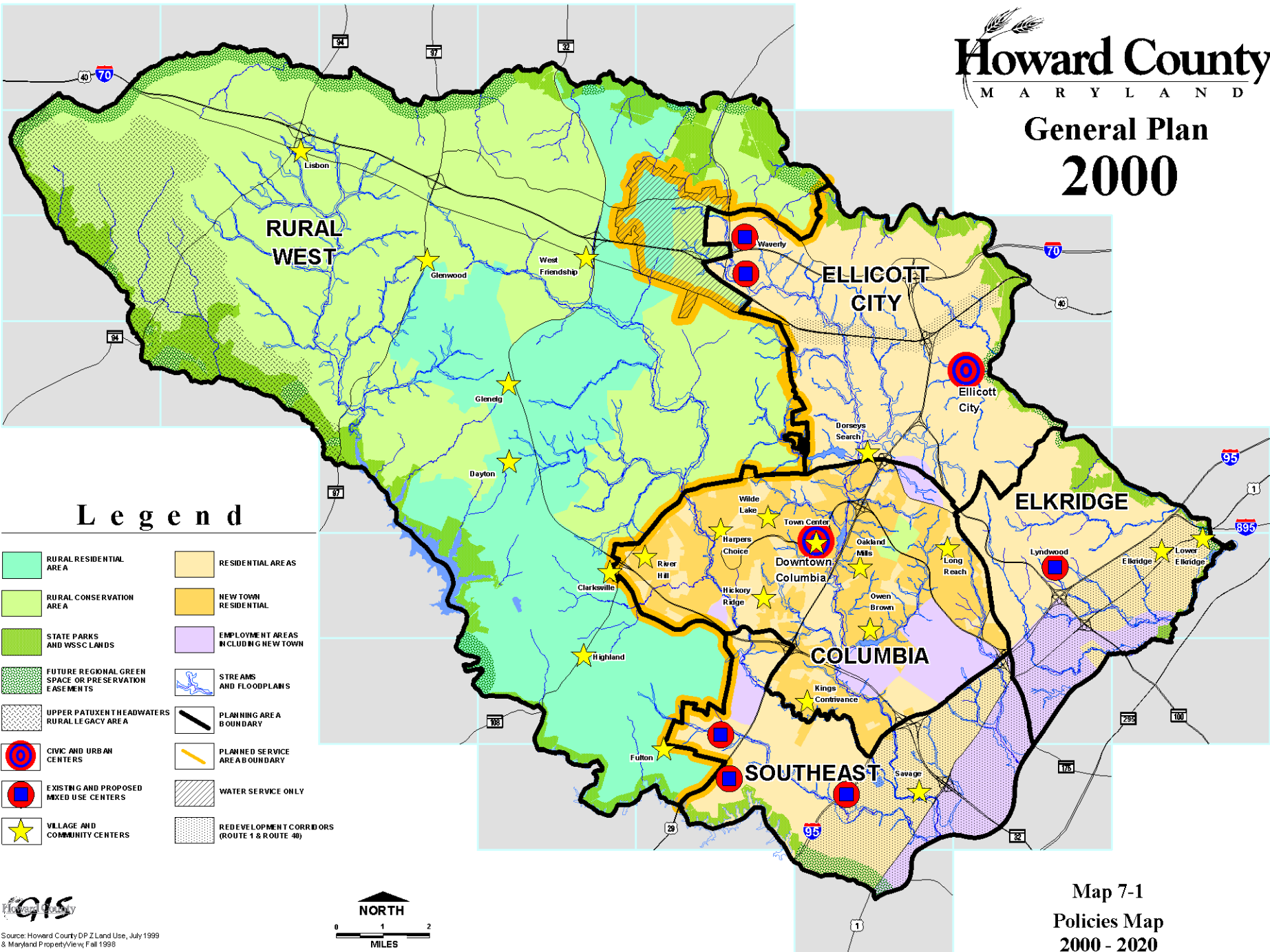
Planning Area ==>	Columbia	Elkridge	Ellicott City	Rural West	Southeast	Total
Population of One Race Alone (Non-Hispanic)	88,178	36,828	61,497	38,740	36,342	261,585
White (Non-Hispanic)	51,593	24,792	40,873	32,682	20,032	169,972
African American (Non-Hispanic)	24,668	6,385	5,488	2,173	10,436	49,150
Amer. Ind. & Alaska Native (Non-Hispanic)	180	76	88	70	97	511
Asian & Pacific Islander (Non-Hispanic)	11,419	5,473	14,915	3,743	5,656	41,206
Some Other Race (Non-Hispanic)	318	102	133	72	121	746
Population of Two or More Races (Non-Hispanic) (1)	3,659	1,239	1,594	855	1,424	8,771
TOTAL NON-HISPANIC POPULATION	91,837	38,067	63,091	39,595	37,766	270,356
TOTAL HISPANIC POPULATION (2)	7,912	2,074	2,288	1,158	3,297	16,729
GRAND TOTAL POPULATION	99,749	40,141	65,379	40,753	41,063	287,085

(1) This option was available for the first time in the 2000 Census.

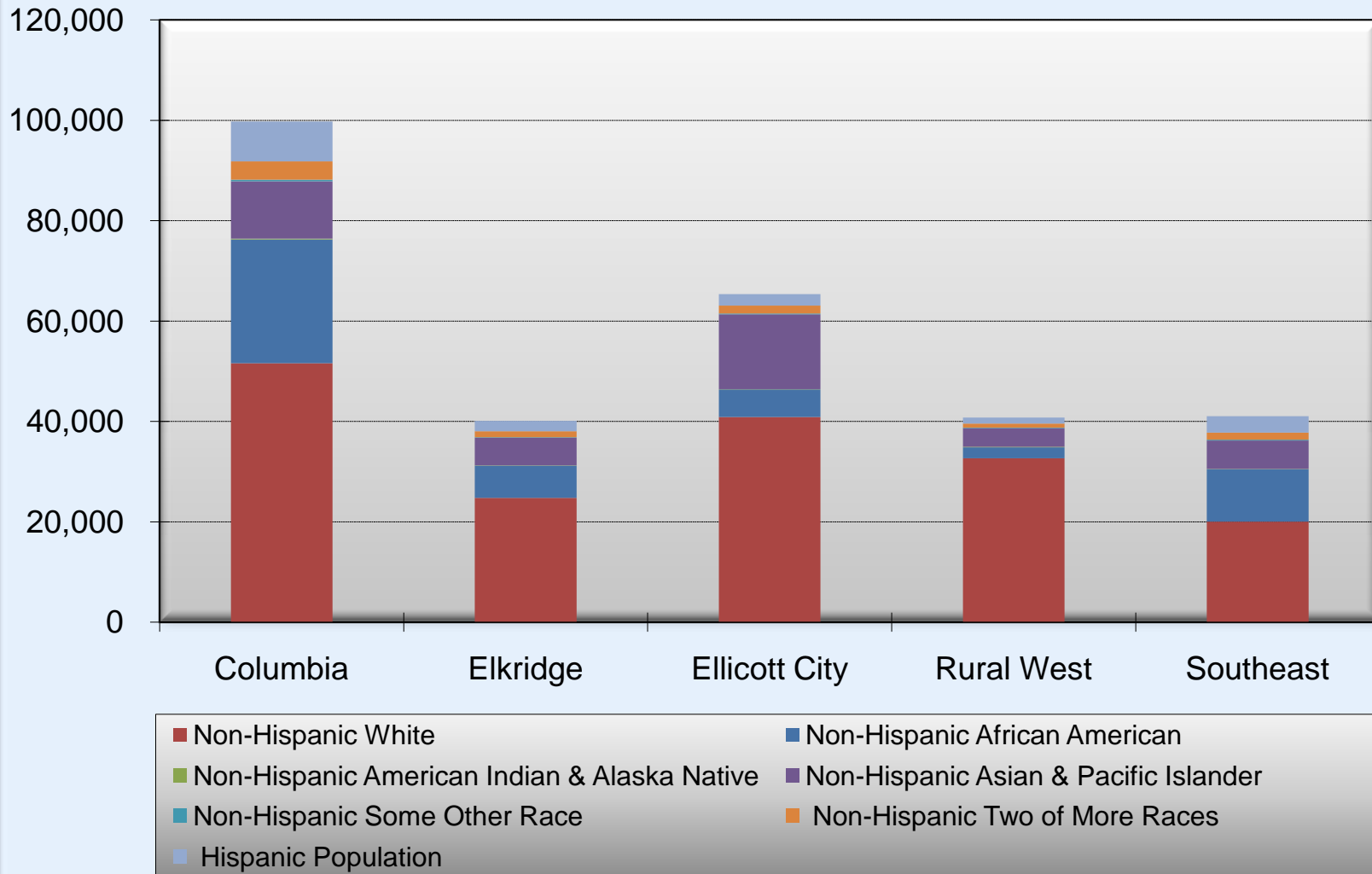
(2) Hispanic Origin can be from any race.

Source: U.S. Census Bureau

General Plan 2000

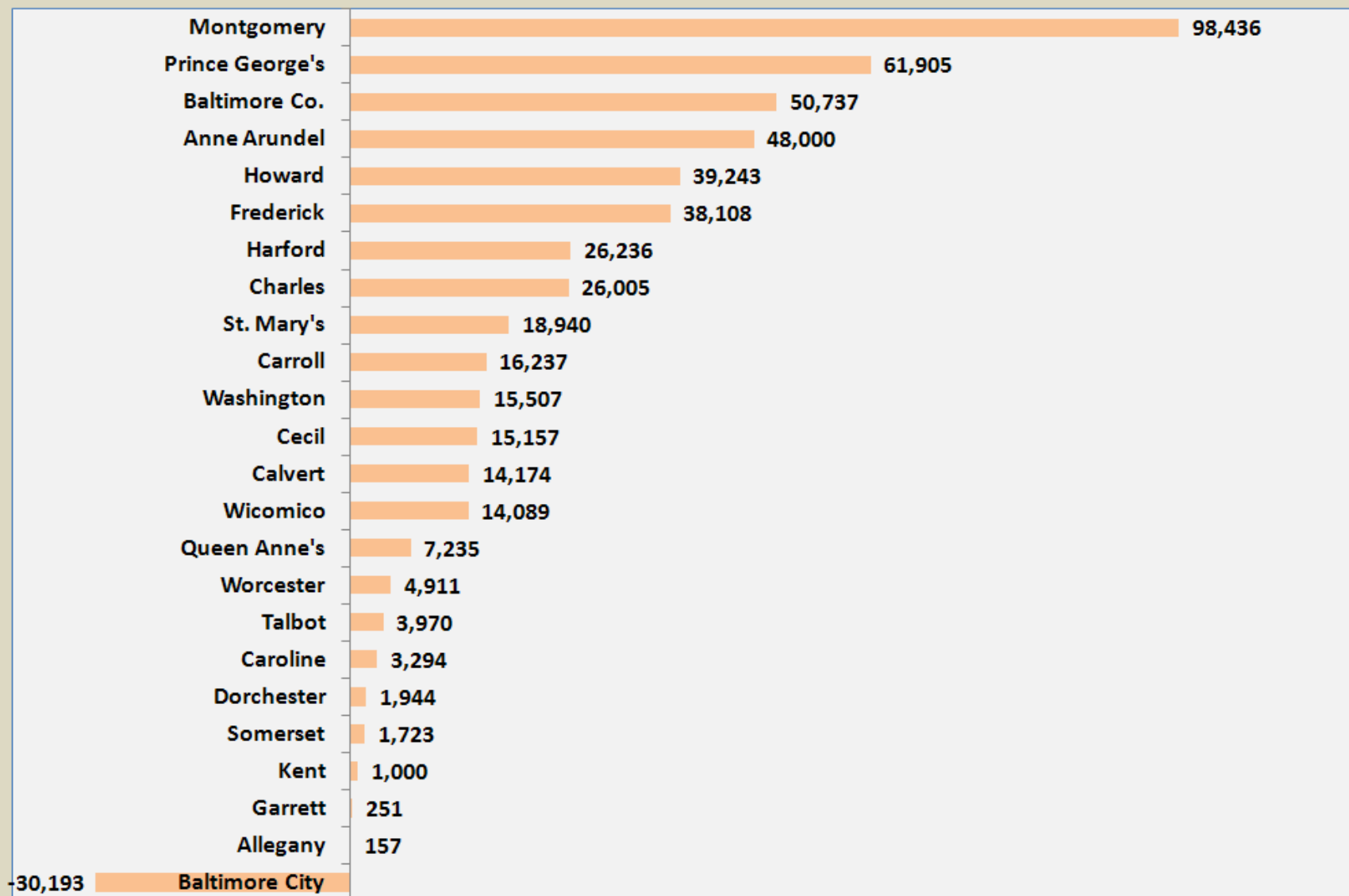


2010 Howard County Population by Race By Planning Area

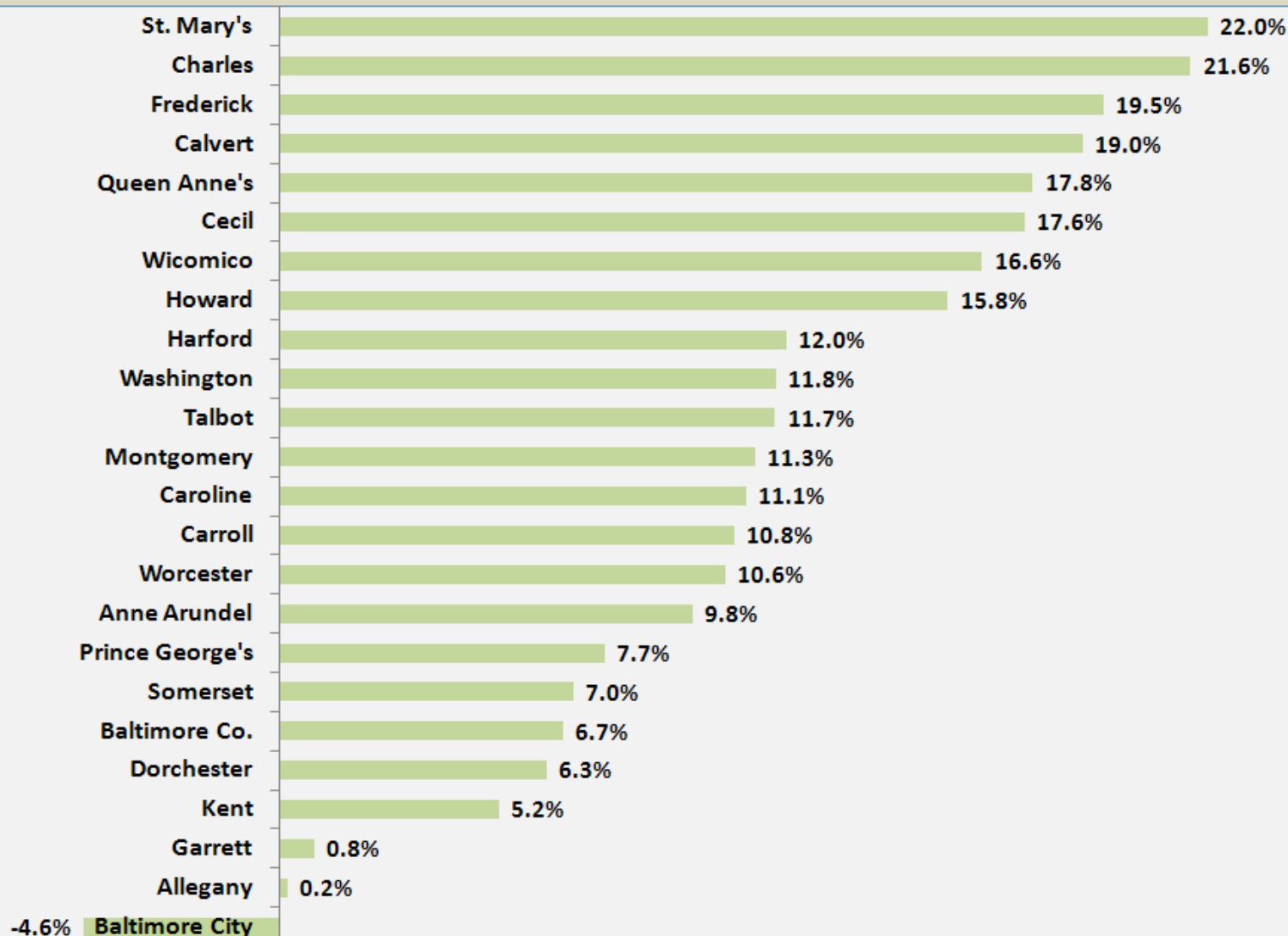


Source: US Census Bureau

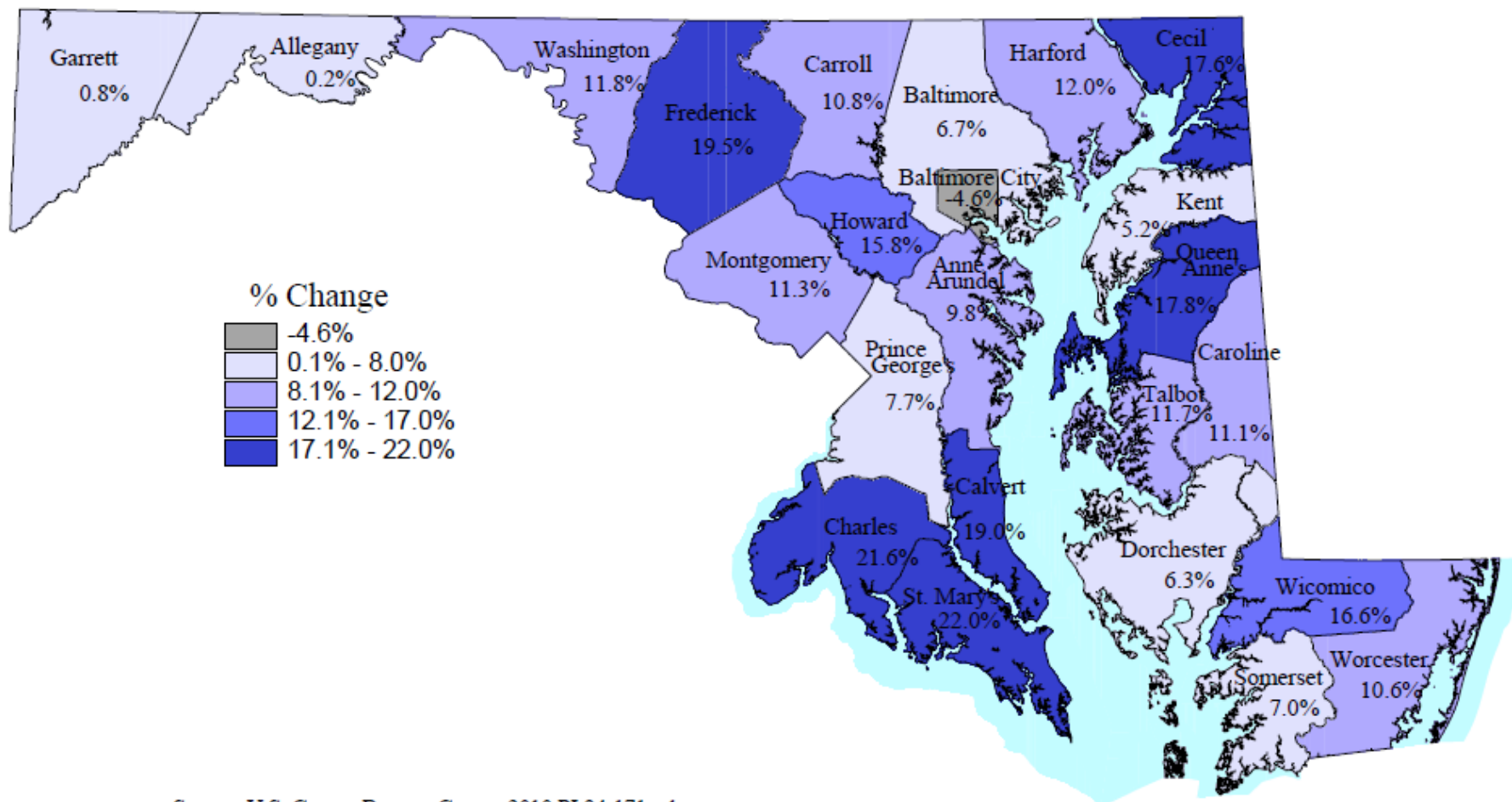
Population Change for Maryland's Jurisdictions, 2000 to 2010



Percent Population Change for Maryland's Jurisdictions, 2000 to 2010

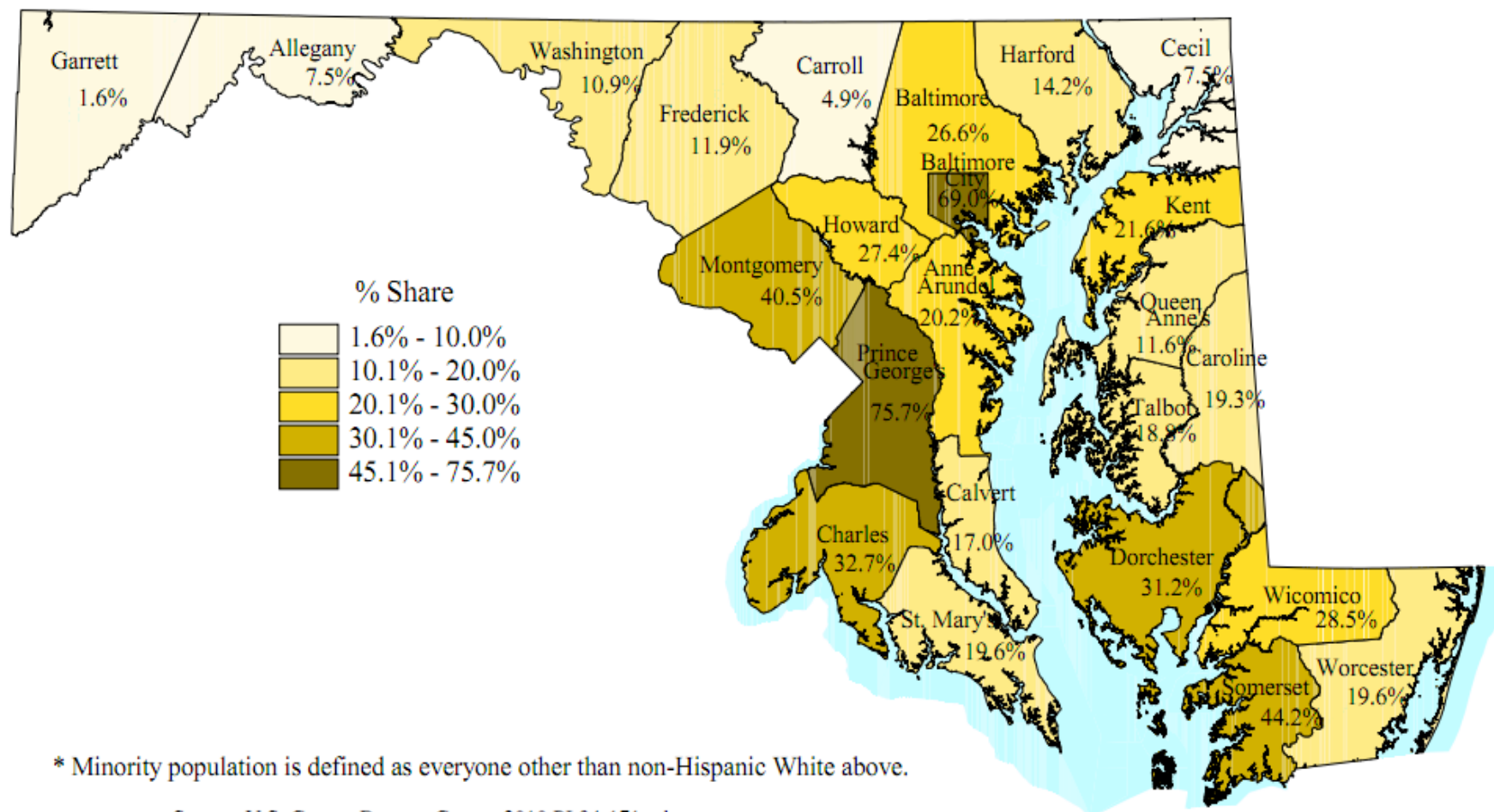


Percent Change in Population for Maryland's Jurisdictions, 2000 to 2010



Source: U.S. Census Bureau, Census 2010 PL94-171 release
Prepared by the Maryland Department of Planning,
Planning and Data Analysis/State Data Center, February 2011

Minority Population Share for Maryland's Jurisdictions - 2000*

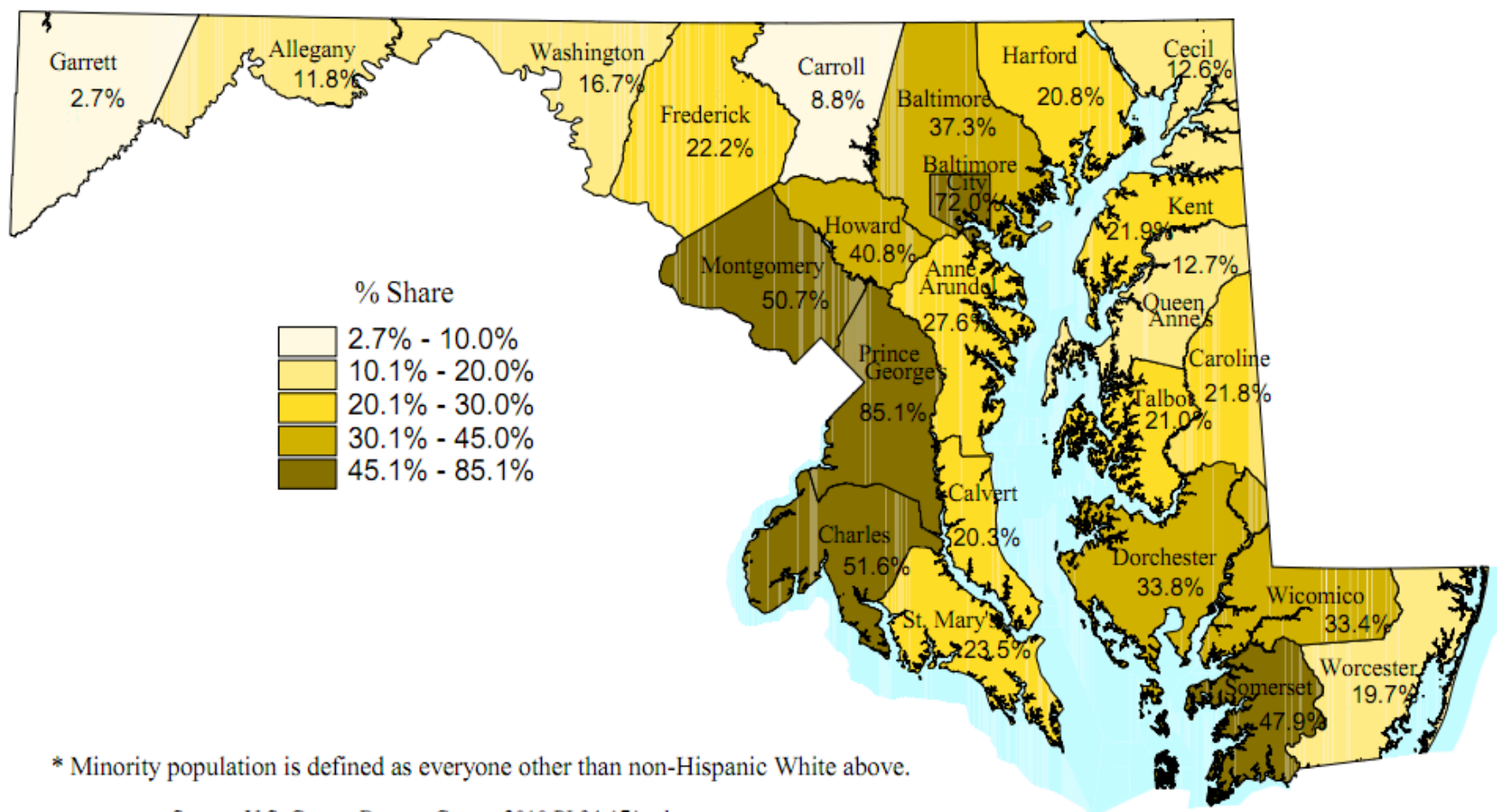


* Minority population is defined as everyone other than non-Hispanic White above.



Source: U.S. Census Bureau, Census 2000 PL94-171 release
 Prepared by the Maryland Department of Planning,
 Planning and Data Analysis/State Data Center, February 2011

Minority Population Share for Maryland's Jurisdictions - 2010

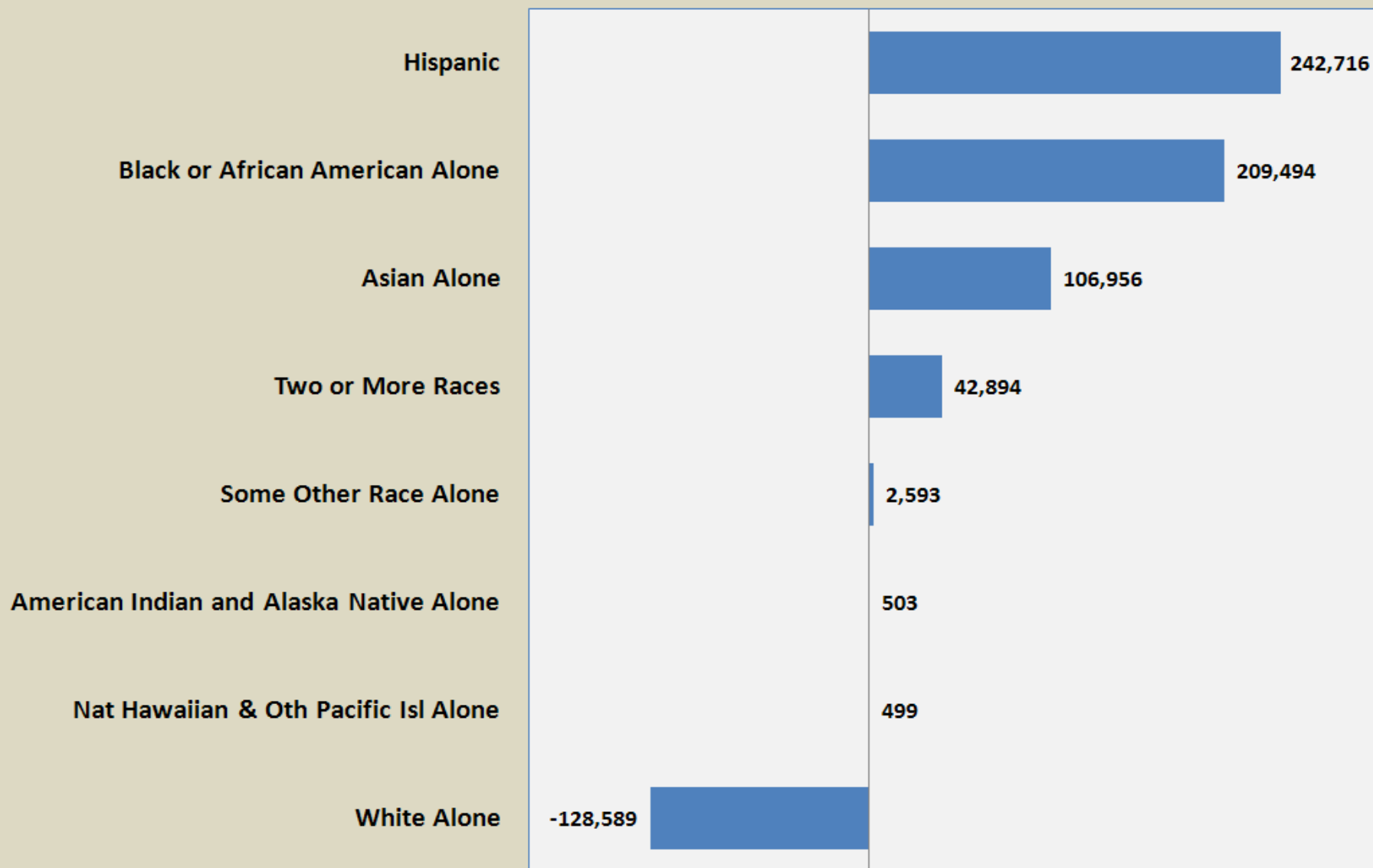


* Minority population is defined as everyone other than non-Hispanic White above.



Source: U.S. Census Bureau, Census 2010 PL94-171 release
Prepared by the Maryland Department of Planning,
Planning and Data Analysis/State Data Center, February 2011

Change in Population by Non-Hispanic Race and Hispanics for Maryland, 2000 to 2010



Percent Change in Population by non-Hispanic Race and Hispanics for Maryland, 2000 to 2010

