

MARS GROUP

Traffic Engineering & Noise Consultants

8507 Horseshoe Road, Ellicott City, Maryland 21043

Tel. 410. 480.2706- www.mars-group.net

Free Flow Speed Determination

For the

WITCHING HOUR FARM LIMITED OUTDOOR ASSEMBLY

Howard County, Maryland

Prepared for

FISHER, COLLINS & CARTER INC.

Centennial Square Office Park
10272 Baltimore National Pike
Ellicott City, Maryland 21042
410.461.2855



April 2023



MARS GROUP

Traffic Engineering and Noise Consultants

8507 Horseshoe Road
Ellicott City, Maryland 21043
410.480.2706, www.mars-group.net

Witching Hour Farm
Contract #S-2307
April 9, 2023

Mr. Frank Manalansan II
President
Fisher, Collins & Carter, Inc.
10272 Baltimore National Pike
Ellicott City, Maryland 21042

Dear Mr. Manalansan II:

MARS Group Inc. completed an 85th percentile operating speed determination within the vicinity of the access point to the proposed Witching Hour Farm property located at 15475 Old Frederick Road in Woodbine, Howard County. Access to the proposed improvement will not change as part of the improvement.

Within the study limits of this project, Old Frederick Road is a major collector that runs eastward from its intersection with MD 97 (Hoods Mill Road) to its intersection with MD 94 (Woodbine Road). The posted speed along Old Frederick Road is 30 mph.

An off peak spot speed survey was collected within the access point to the 15475 Old Frederick Road property on Thursday April 6, 2023 between the hours of 11:00 a.m. and 12:10 p.m. Forty six vehicles were observed traveling westbound and forty four vehicles were observed traveling eastbound.

The following table presents a summary statistics on the directional speed data collected along Old Frederick Road. A value of 29.50 mph for 15th percentile speed indicates that 15% of vehicles travel at or slower than 29.50 mph. Likewise, values 35.00 and 39.50 mph for 50th and 85th percentiles indicate that 50% and 85 % travel at or slower than 35.00 and 39.50 mph respectively.

Old Frederick Road	No. of Vehicles Observed	15 th % Speed (MPH)	50 th % Speed (MPH)	85 th % Speed (MPH)
Westbound	46	29.50	35.00	39.50
Eastbound	44	31.20	35.20	40.70

Attached are the data sheets to support our findings. If you have any questions or concerns? Please do not hesitate to call me.

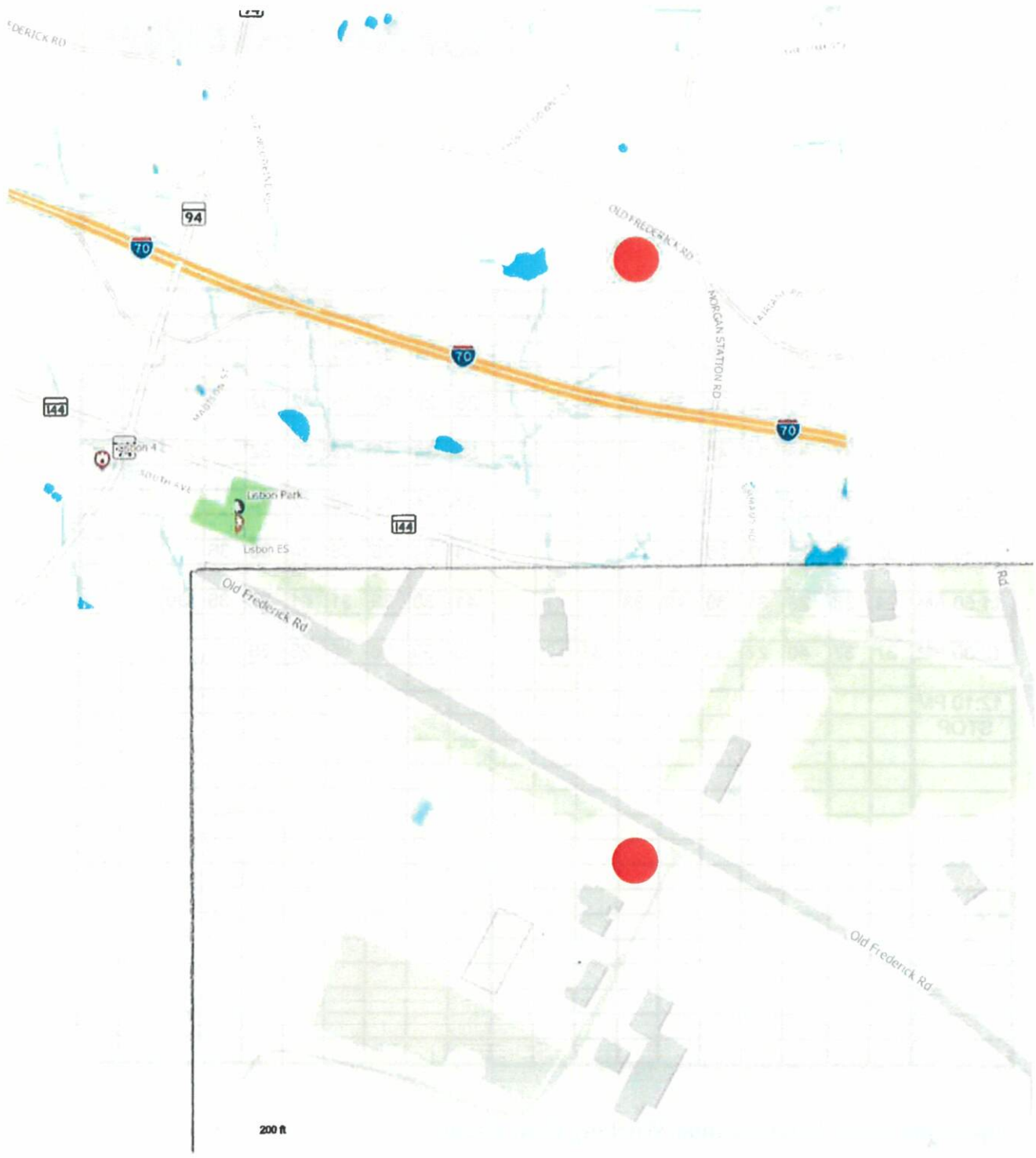
All the best!
MARS Group Inc.



Monty A. Rahman
Principal

I hereby certify that these documents were prepared and/or reviewed by me, and that I am a duly licensed professional engineer under the Laws of the State of Maryland, License No. 21864. Expiration Date: 02,03,2024.

Operating Speed Witching Hour Farm



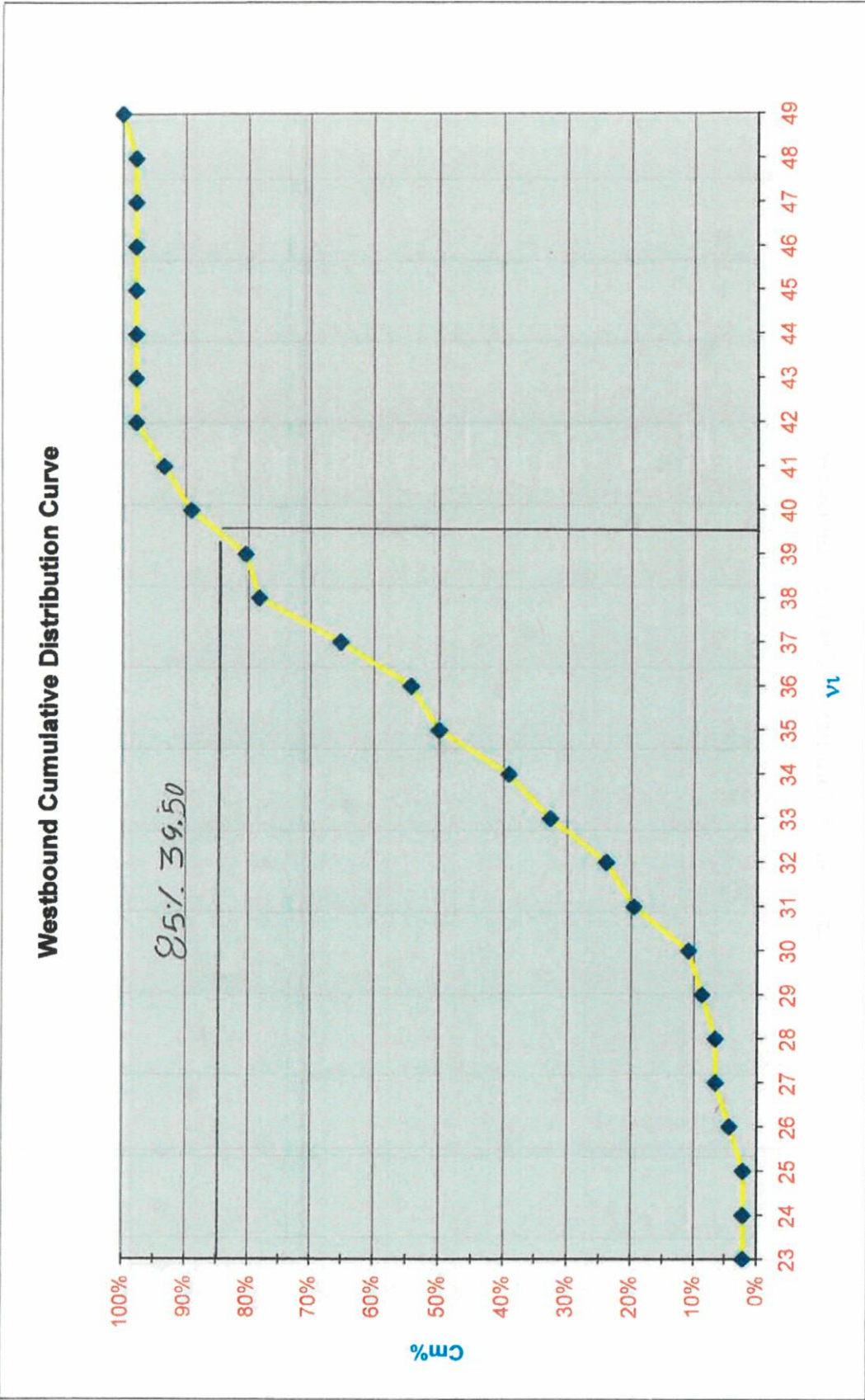
NOT TO SCALE

MARS GROUP

Multimodal Map

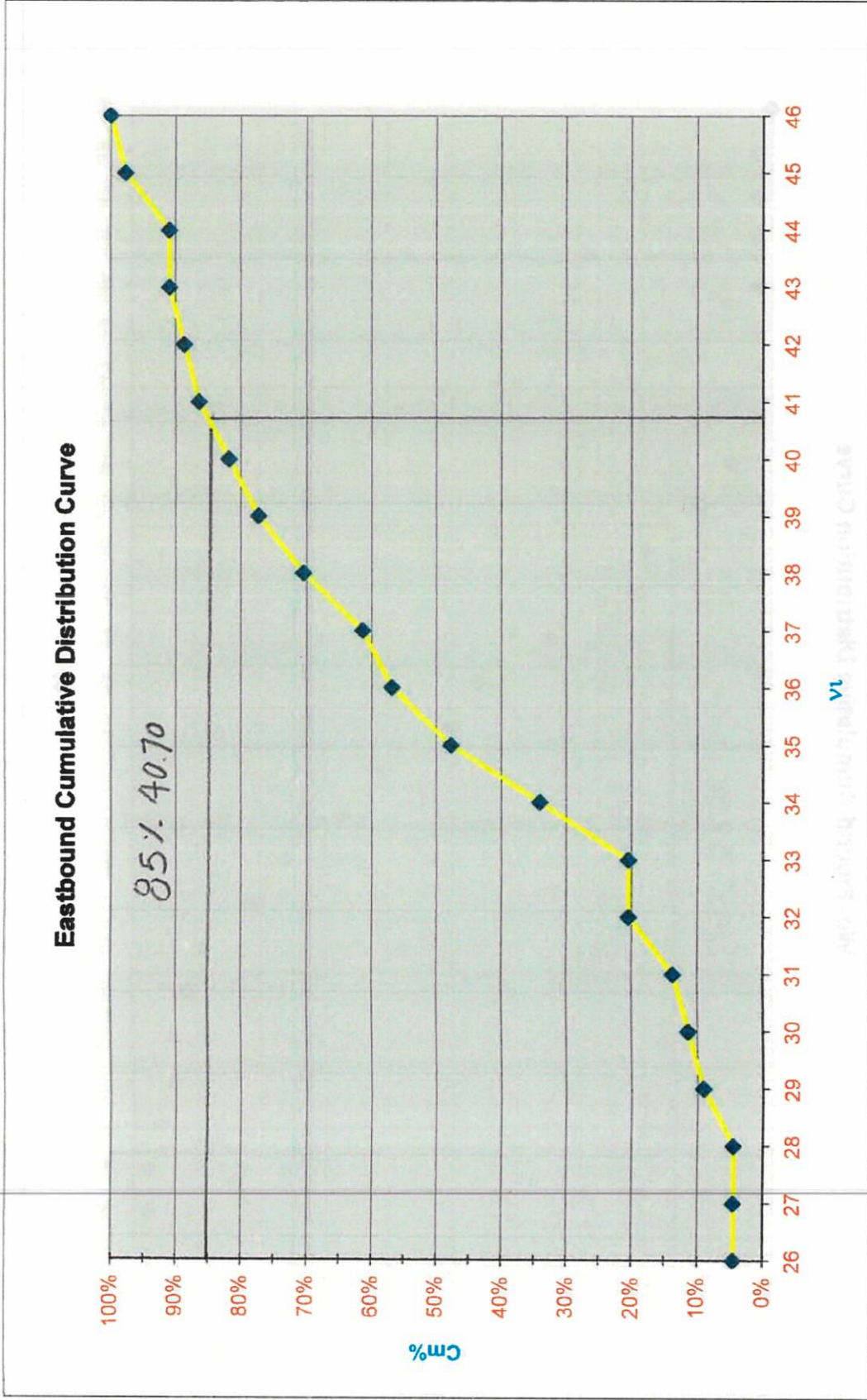
Spot Speed Data		MARS GROUP												
Westbound														
Site: Old Frederick Road		Speed Limit: 30 MPH		15% @: 29.50 mph										
Date: 04,06,23		Weather: Overcast		50% @: 35.00 mph										
		Data Collector: M.A.R.		85% @: 39.50 mph										
vr	5				10				15		ft	%	Σft	Cm%
23	✓										1	2.2%	1	2.17%
24											0	0.0%	1	2.17%
25											0	0.0%	1	2.17%
26	✓										1	2.2%	2	4.35%
27	✓										1	2.2%	3	6.52%
28											0	0.0%	3	6.52%
29	✓										1	2.2%	4	8.70%
30	✓										1	2.2%	5	10.87%
31	✓	✓	✓	✓							4	8.7%	9	19.57%
32	✓	✓									2	4.3%	11	23.91%
33	✓	✓	✓	✓							4	8.7%	15	32.61%
34	✓	✓	✓								3	6.5%	18	39.13%
35	✓	✓	✓	✓	✓						5	10.9%	23	50.00%
36	✓	✓									2	4.3%	25	54.35%
37	✓	✓	✓	✓	✓						5	10.9%	30	65.22%
38	✓	✓	✓	✓	✓	✓					6	13.0%	36	78.26%
39	✓										1	2.2%	37	80.43%
40	✓	✓	✓	✓							4	8.7%	41	89.13%
41	✓	✓									2	4.3%	43	93.48%
42	✓	✓									2	4.3%	45	97.83%
43											0	0.0%	45	97.83%
44											0	0.0%	45	97.83%
45											0	0.0%	45	97.83%
46											0	0.0%	45	97.83%
47											0	0.0%	45	97.83%
48											0	0.0%	45	97.83%
49	✓										1	2.2%	46	100.00%
Total											46	100.0%	46	100.0%

Operating Speed Determination: Witching Hour Farm.



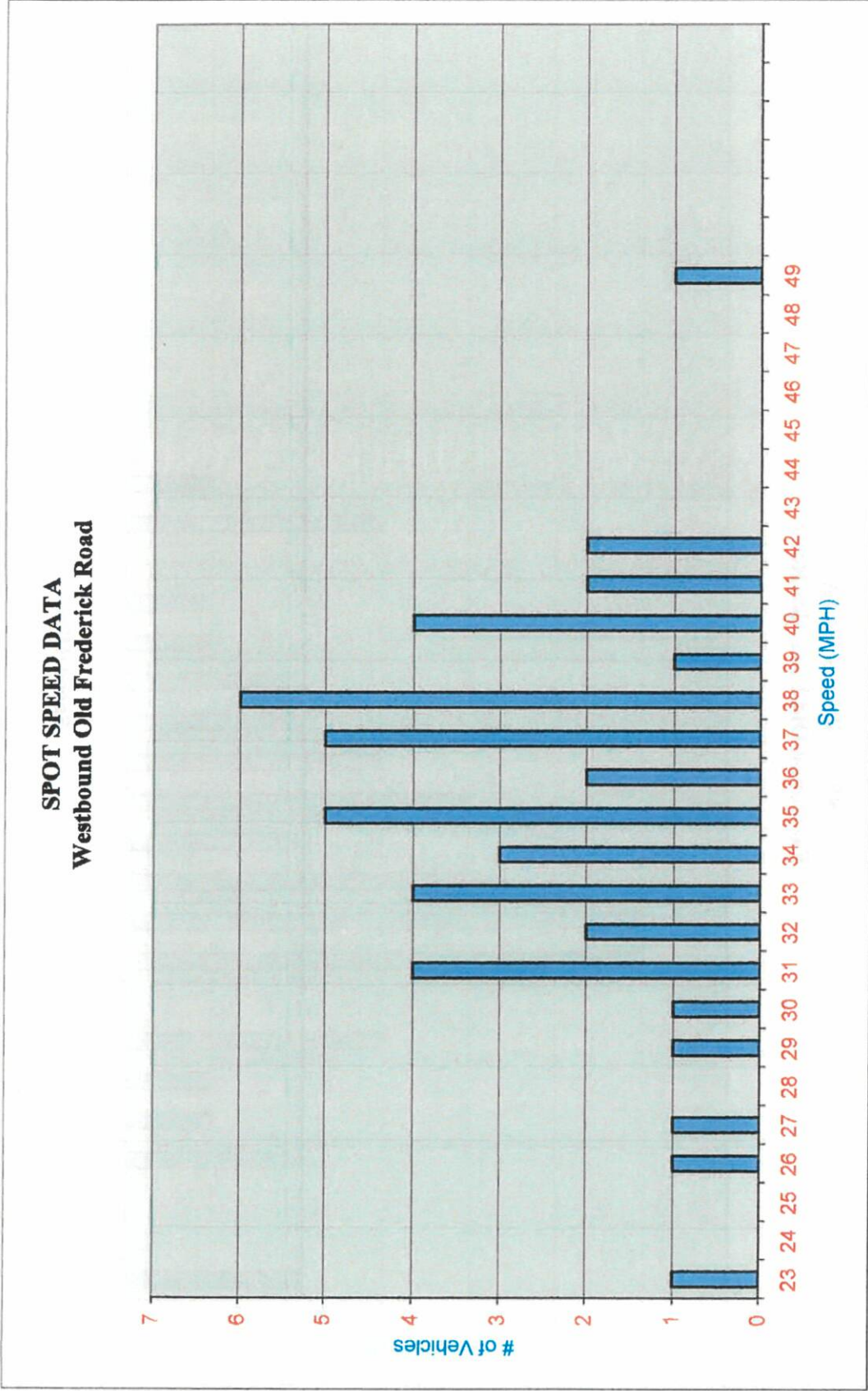
Operating Speed Determination: Witching Hour Farm.





Operating Speed Determination: Witching Hour Farm.

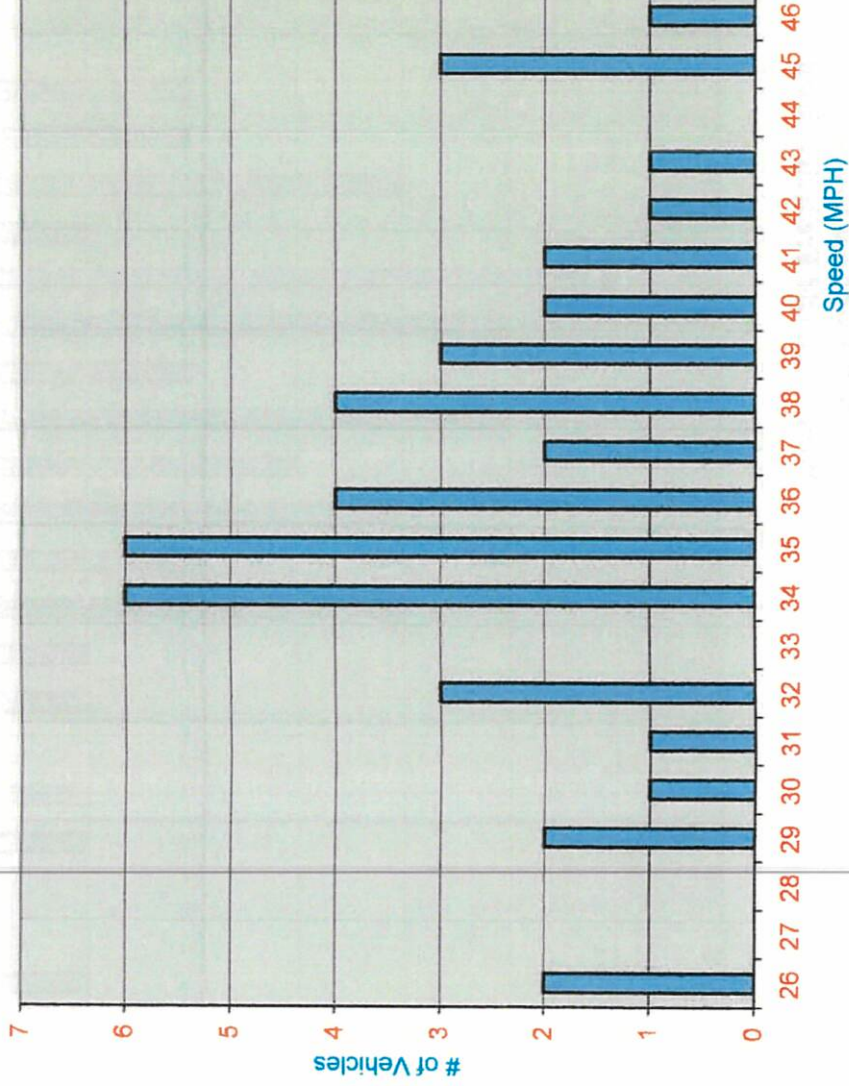
MARS GROUP



Operating Speed Determination: **Witching Hour Farm.**

MARS GROUP

SPOT SPEED DATA
Eastbound Old Frederick Road



Operating Speed Determination: **Witching Hour Farm.**

MARS GROUP

END END END END END END END END END END END END END END

MARS GROUP

Traffic Engineering & Noise Consultants

8507 Horseshoe Road

Ellicott City, Maryland 21043

Tel. 410.480.2706, fax 410.480.8066

www.mars-group.net

